



BY CAR

On the motorway E42, take exit number 8 to Spa-Jalhay.
Go straight-on at the roundabout.
Then, follow the road for 3 km.
The hotel is located at the next roundabout on the right-hand-side.

30 minutes from Liège/Maastricht/Aachen

75 minutes from Brussels/Dusseldorf/Cologne/Eindhoven/Luxembourg

150 minutes from Amsterdam

BRAIN FOOD
FOR MEETINGS

BRAIN BOX
BREAK-OUT ROOM

FREE
INTERNET

100% SATISFACTION
GUARANTEE

Club
CARLSON
FOR PLANNERS

THINK
PLANET

Radisson BLU
BALMORAL HOTEL, SPA

MEET IN THE GREEN SIDE

SPA

EXPERIENCE
MEETINGS

HOTELS DESIGNED TO SAY YES!

WELCOME

The Radisson Blu Balmoral Hotel with its Anglo-Norman style architecture is located on the edge of the forest. Easily accessible by car, the hotel is located 3 minutes away from the city centre of Spa, the Royal Golf Club des Fagnes and the "Thermes de Spa". It is also only 10 minutes away from the world-famous Formula 1 racing track of Spa-Francorchamps. Hidden from the busy outside world, the City of Spa is truly the pearl of the Belgian Ardennes!

BRAIN BOX
BREAK-OUT ROOM

The Green
Key

FREE
INTERNET

EXPERIENCE MEETINGS

Experience Meetings is a concept that harmonizes the meeting essentials; the break-out rooms, connectivity, food, service, client-satisfaction and environmental sustainability. It is all about making it easy for you to organize your meeting or event. We make it happen with our Yes I Can! service.

MEETING & EVENTS

Whether you need to organise a meeting, seminar, incentive, road show, product launch, training course, cocktail party or dinner, the Radisson Blu Balmoral is the perfect venue. All six meeting rooms have daylight, air-conditioning and audio-visual equipment. Our Meeting & Events team is there for you and will assist you with the planning of your events, conferences and seminars right to the very last detail.

The comfortable meeting rooms ZEN 1, 2 & 3 can, when combined, welcome up to 150 guests in theatre style or 250 guests for a reception. The ZEN 4 can welcome up to 80 guests in theatre style and the ZEN 5, our boardroom overlooking the garden, offers an exceptional comfort for groups up to 12 people. As for the Léopold Salon, it is the ideal place for a private lunch or dinner and can also be used as a break-out room.

12 reasons to come to the Radisson Blu Balmoral:

- "Exclusively Yours" – Possible privatization of the entire hotel
- Eco labelled by "Green Key" – In a unique green and relaxing setting
- Historical architecture with modern comfort
- Easy access & 80 parking places free of charge
- Free Wi-Fi
- Daylight in all our meeting rooms
- Exceptional culinary experience (Chef with Michelin-star background)
- Earn points with our loyalty program Club Carlson for Planners
- 100% Satisfaction Guarantee
- Brain Food: meeting food to keep you motivated and stimulated throughout your meeting
- Outdoor activities on the doorstep of the hotel
- Warm and cozy atmosphere

ACTIVITIES & OUTSIDE CATERING

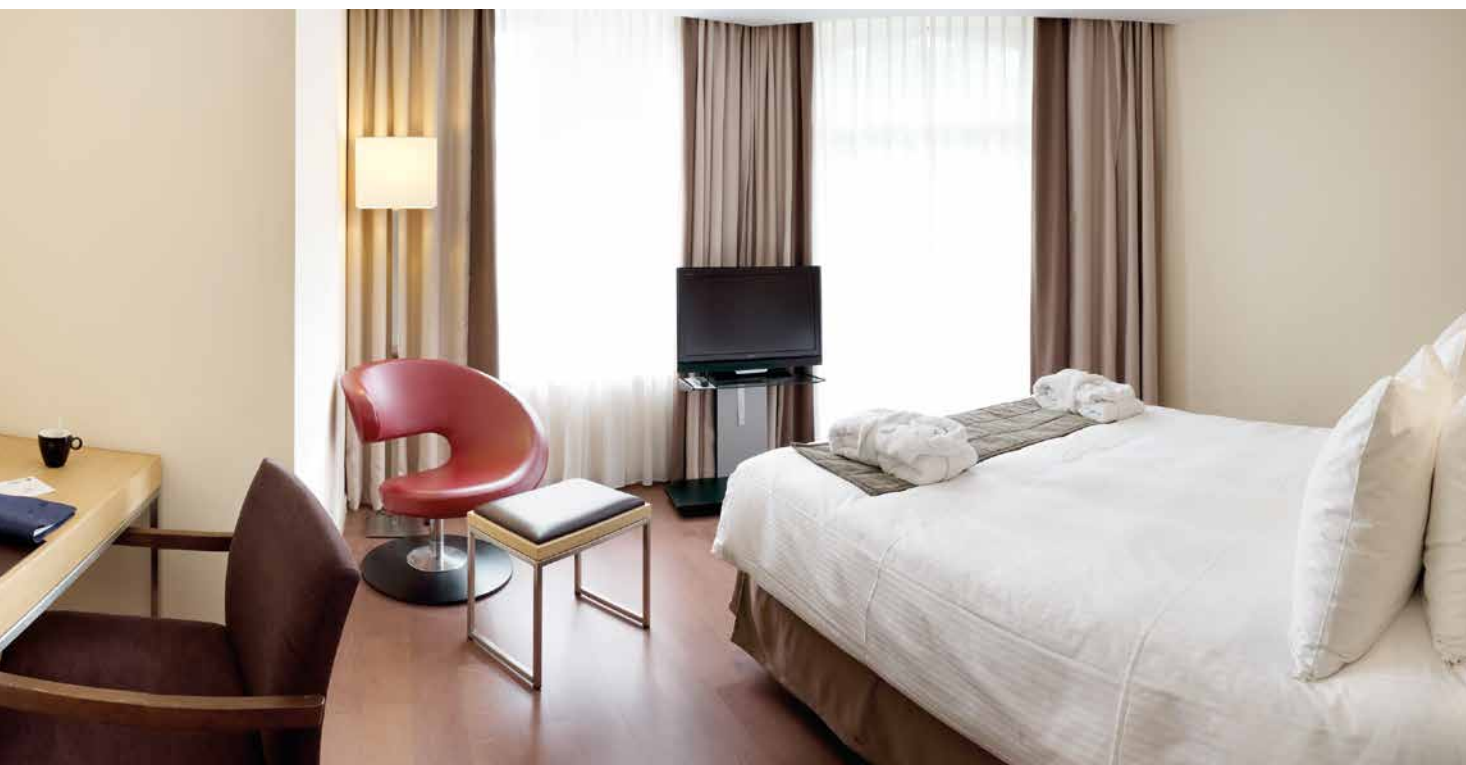
Let us help you organize your team-building activities, which can include racing on the Formula 1 racing track of Spa-Francorchamps, quad driving, mountain biking, playing golf, sky-diving, a visit to the Casino of Spa and much more.

Culinary activities include cooking classes with our experienced kitchen team and having a barbecue in a typical cosy cottage in the middle of the forest. We offer themed buffet options and use of our open kitchen with roaster. Let us cater you at external locations such as L'eau Rouge (located on the racing track), Abbey of Stavelot or the Balmoral Castle.

Our dedicated Meeting & Events team will customize your event and make it unforgettable.

RADISSON BLU BALMORAL

Radisson Blu Balmoral Hotel, Spa
Av. Léopold II, 40 | 4900 Spa | Belgium
Tel : +32 (0) 87 79 21 41 | Fax: +32 (0)87 79 21 51
sales.spa@radissonblu.com
www.radissonblu.com/balmoralhotel-spa



ROOMS & SUITES

The Radisson Blu Balmoral Hotel offers 106 rooms, of which 21 spacious one-bedroom Suites. All rooms are non-smoking and include free WI-FI. The contemporary design and use of natural materials will allow you to relax and unwind. Connecting bedrooms are available upon request.

FITNESS & RELAXATION



The "Balmoral Wellness Center" features a 10 meter pool, a hammam and a sauna, as well as four wellness treatment rooms for exclusive facial and indulging treatments. With a peaceful ambience and elegant design, the wellness area offers a genuine sense of escape. In the hands of skilled therapists, you will experience result-oriented massages and body treatments. Separately from the wellness, to ensure tranquility, the hotel offers a small but functional fitness room with cardio equipment and a multi-functional exercise machine.

WWW.BALMORALWELLNESSCENTER.COM

RESTAURANT & BAR

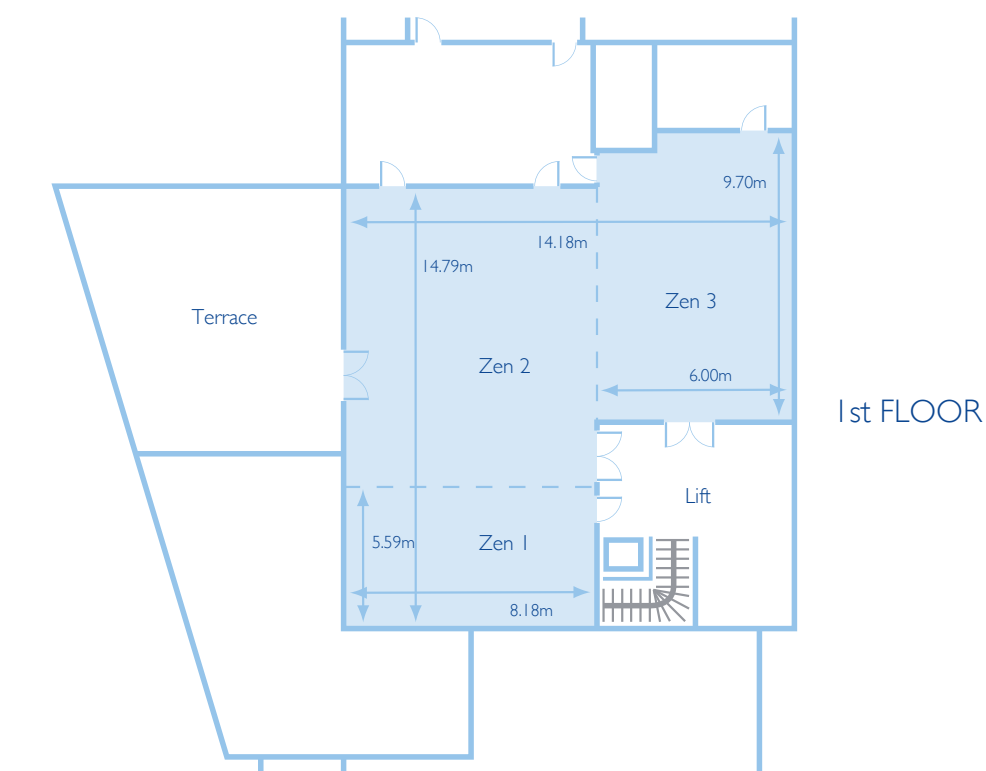
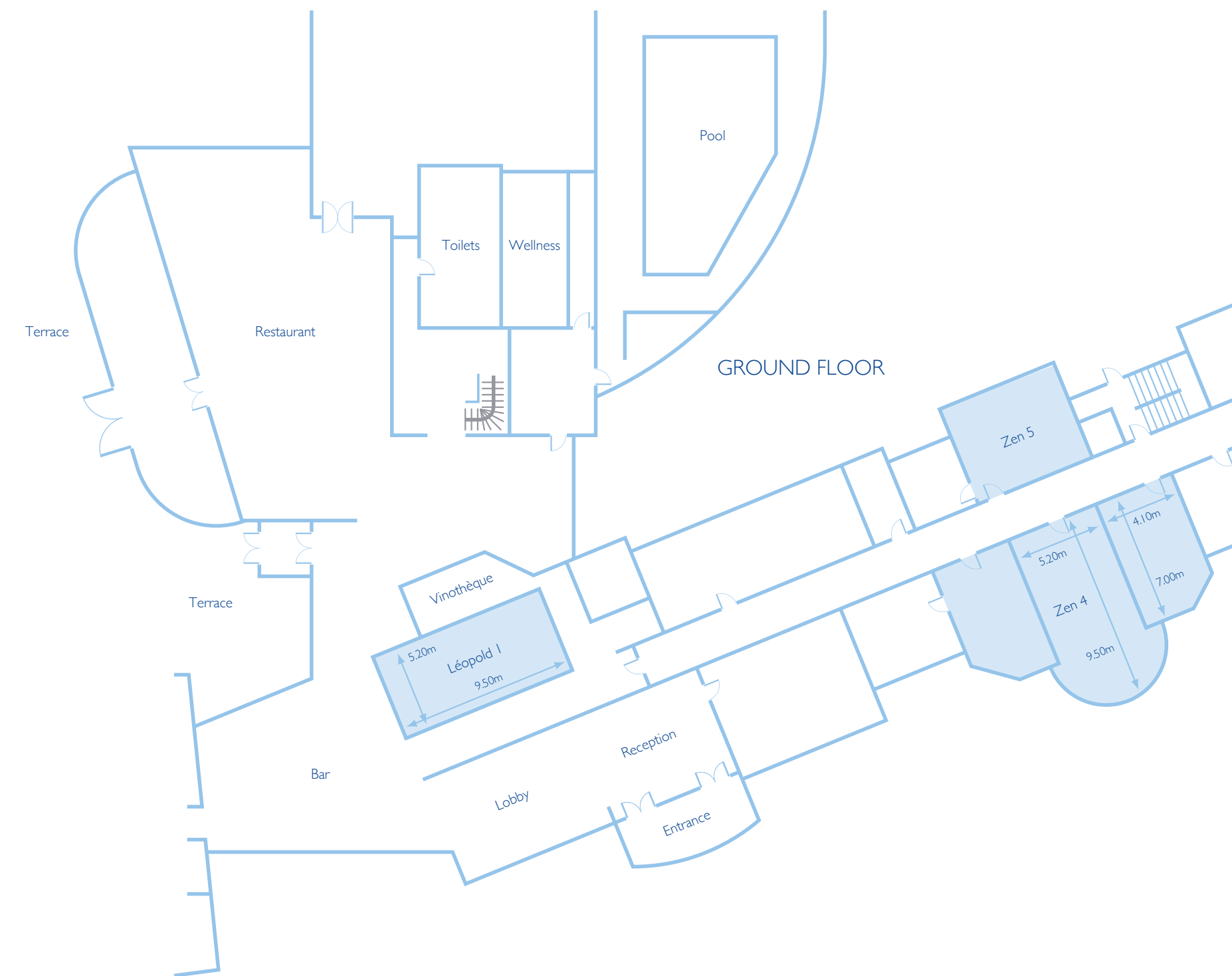


The stylish restaurant "Entre Terre & Mer" welcomes you in an elegant atmosphere and offers you the best local and sea products. Renovated in October 2013, the restaurant proposes a dynamic cooking concept with an exclusive open-kitchen and a unique roaster. The adjacent veranda overlooks the garden and radiates a charming ambience. As for our wine cellar, we hold over 80 wines in our chilled Vintothèque.

WWW.ENTRETERREETMER.BE

Dedicated to the most famous automobile race drivers, our "L'Entre-Temps" bar is the ideal place to have a drink in a cozy atmosphere whilst enjoying the gas fireplace or playing at the pool table.

During the beautiful Spring and Summer days, we extend the restaurant and bar so our guests can enjoy food and drinks on our terrace. It is a fantastic place to enjoy the tranquility of the garden, surrounded by the forest of Spa.



MAXIMUM CAPACITIES

	Banquet	Theatre	U-shape	Reception	School Style	Cabaret	Bloc	Dimensions l x L x h	Surface
Zen 1	30	30	16	60	24	24	24	5.59 x 8.18 x 3.40	46 m ²
Zen 2	72	80	30	90	54	48	30	9.20 x 8.18 x 3.40	75 m ²
Zen 3	40	50	24	70	32	32	30	9.20 x 6.00 x 3.40	55 m ²
Zen 1 + Zen 2	100	120	60	150	80	72	48	14.79 x 8.18 x 3.40	121 m ²
Zen 1 + Zen 2 + Zen 3	130	150	-	250	120	84	-	14.18 x 14.79 x 3.40	176 m ²
Zen 4	50	80	44	120	60	30	44	6.00 x 13.5 x 3.00	85 m ²
Zen 5	-	-	-	-	-	-	12	5.20 x 6.20 x 2.80	32 m ²
Salon Léopold	30	40	20	60	24	18	20	9.5 x 5.20 x 3.00	49 m ²